

Annex 3: Pottery sherds – macroscopic analysis

甘肃省马家窑文化遗存图

1:5000000 0 50 100 150公里

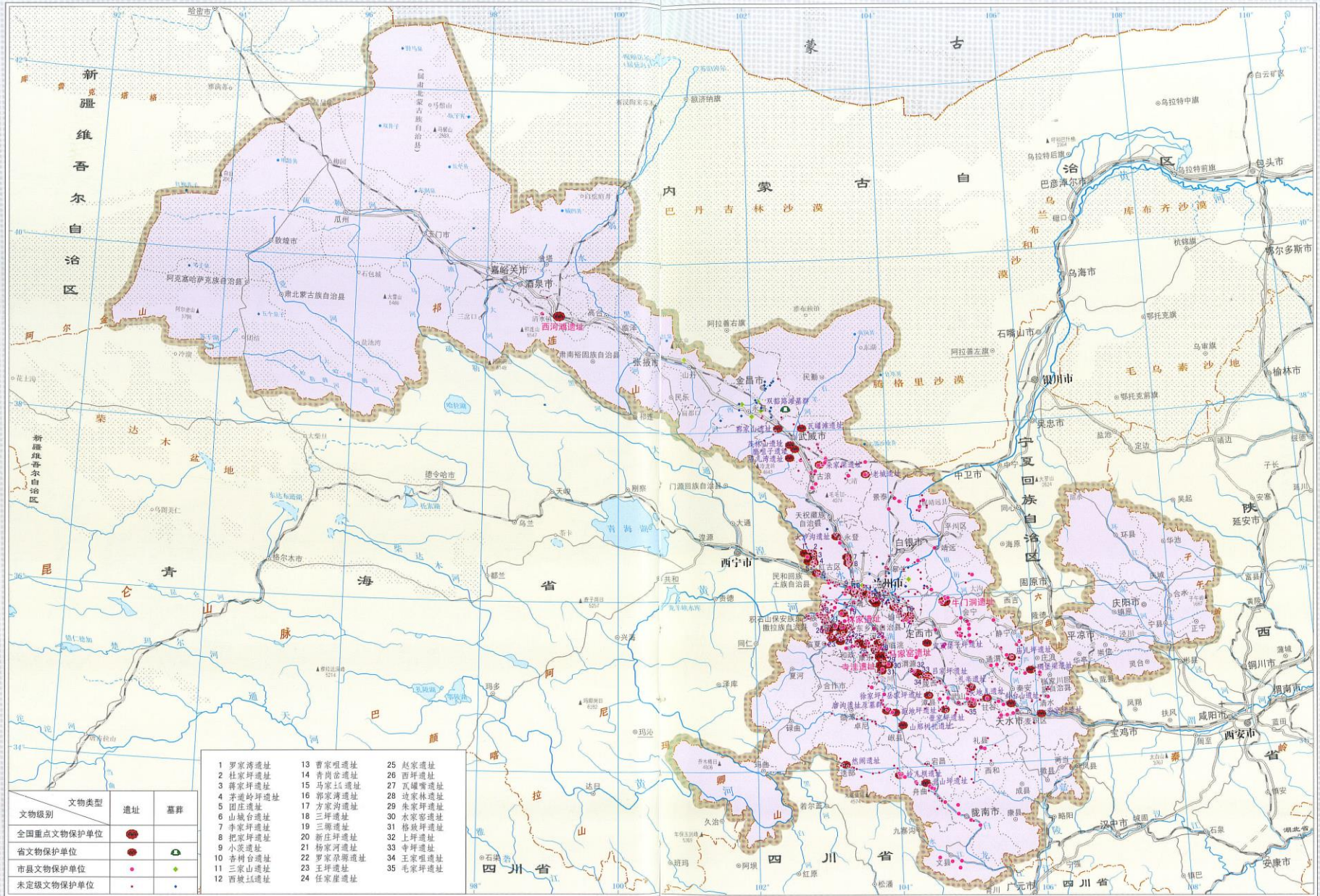


Fig. A3.1. Distribution of the Neolithic Majiayao-period sites in the Gansu province; from Atlas of Chinese Cultural Relics: Gansu Province (Guojia Wenwuji 2011a:70-71).

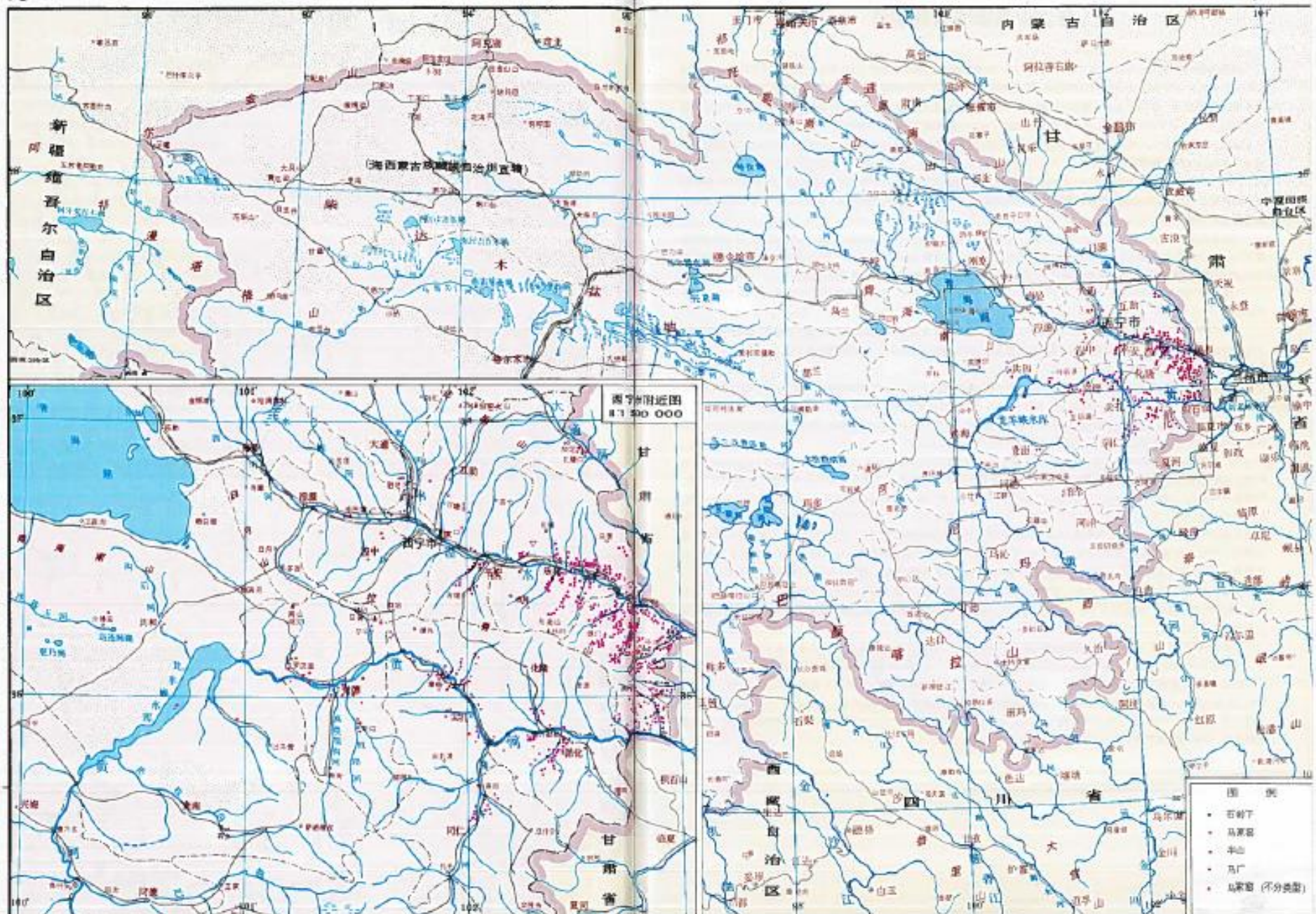


Fig. A3.2. Distribution of the Neolithic Majiayao-period sites in Qinghai province; from Atlas of Chinese Cultural Relics: Qinghai Province (Guojia Wenwuju 1996:15-16).

MAJIAYAO (71 samples)

Fine (40 samples)

Table A3.1. Fine pottery fired in oxidising atmosphere; Majiayao site.

Sample number	Firing atmosphere / core colours	Surface treatment and preservation state of the decoration	Sherd type	Wall thickness in mm	Vessel shape
CNP5	oxidising	polished and painted black, well preserved	rim and upper body	3.5-5.7	small bowl
CNP6	oxidising	polished and painted black, mostly preserved	body	7-7.5	unknown, possibly from the same vessel as CNP7 and CNP8
CNP41	oxidising	polished and painted black, well preserved	rim	8.5-9	unknown
CNP44	oxidising	polished, painted black, appliqué, mostly preserved	body	5	small bowl
CNP45	oxidising	polished and painted black, well preserved	neck	5.3-6	closed vessel
CNP46	oxidising	polished and painted black, well preserved	rim	5.3-6.4	closed vessel
CNP48	oxidising	polished, painted brown (?) on the inside and outside, poorly preserved	body	5.3-6	shallow open vessel/bowl?
CNP51	uneven oxidation, thin buff core, red margins	plain	body	5.1-6	unknown
CNP54	oxidising	polished and painted black, well preserved	body	4-4.8	unknown
CNP55	oxidising	polished and painted black, well preserved	body	4.1-5	unknown, closed vessel?

CNP56	oxidising	polished and painted black, well preserved	rim and upper body	4.6- 5.7	small bowl
CNP57	oxidising	polished and painted black, mostly preserved	body	6-6.7	small bowl
CNP59	oxidising	polished, painted black, appliqué, well preserved	rim	4-5	small bowl
CNP60	oxidising	polished and painted black inside and outside, well preserved	rim and upper body	3-3.5	open bowl; same vessel as CNP61?
CNP62	uneven oxidation: buff yellow inner core, red outer core, buff yellow margins	polished and painted in reddish brown (?) outside and inside, poorly preserved	rim	rim 9, wall 7.3	unknown, open vessel?
CNP63	oxidised, buff core, red margins	polished and painted black inside and outside, mostly preserved	rim	rim 9, wall 7	open bowl
CNP65	oxidising	polished and painted black, mostly preserved	rim	7-7.2	unknown
CNP66	uneven oxidation: buff yellow inner core, red outer core, buff yellow margins	polished and painted black, well preserved	neck	6-9	unknown, closed vessel
CNP68	uneven oxidation: buff yellow inner core, red outer core, buff yellow margins	polished and painted black, well preserved	neck	9-10	unknown, closed vessel
CNP69	oxidising	polished and painted black, well preserved	neck	6-7.5	unknown, closed vessel
CNP70	oxidising	polished and painted black, mostly preserved	neck	9.5-10	unknown, closed vessel

Table A3.2. Fine pottery fired in reducing atmosphere; Majiayao site.

Sample number	Firing atmosphere / core colours	Surface treatment and preservation state of the decoration	Sherd type	Wall thickness in mm	Vessel shape
CNP3	reducing	plain polished, well preserved	body	4.1-5	unknown
CNP4	reducing	polished, painted black (?), well preserved	body	3-4	unknown
CNP15	reducing	impression, well preserved	rim and neck	4-6	small, closed vessel

Table A3.3. Fine pottery with oxidised core and reduced margins; Majiayao site.

Sample number	Firing atmosphere / core colours	Surface treatment and preservation state of the decoration	Sherd type	Wall thickness in mm	Vessel shape
CNP17	weak reduction? oxidised core, reduced margins	cross-cord impression, well preserved	body	5.7-6.3	unknown

Table A3.4. Fine pottery with reduced core and oxidised margins; Majiayao site.

Sample number	Firing atmosphere / core colours	Surface treatment and preservation state of the decoration	Sherd type	Wall thickness in mm	Vessel shape
CNP8	reduced core, oxidised margins	polished and painted in black, mostly preserved	body	4-4.5	unknown, possibly from the same vessel as CNP6 and CNP7
CNP38	slightly reduced core, oxidised margins	polished and painted in black, well preserved	rim	11	unknown, large, closed vessel?
CNP39	slightly reduced core, oxidised margins	polished and painted in black, mostly preserved	rim	5.5-6.5	unknown, large storage vessel?

CNP42	slightly reduced core, oxidised margins	polished and painted brown (?), well preserved	neck	5-6.8	unknown, closed vessel?
CNP43	reduced core, oxidised margins	polished and painted in black, appliqué, mostly preserved	rim	4-5.6	small bowl
CNP47	slightly reduced core, oxidised margins	polished and painted black, well preserved	body	5-6.5	unknown
CNP49	reduced core, oxidised margins	polished and painted brown (?), mostly preserved	body	7-7.6	unknown
CNP50	reduced core, oxidised margins	polished and painted brown (?), well preserved	body	7.4-8.3	unknown
CNP53	reduced core, oxidised margins	polished, painted in black, appliqué, well preserved	rim and upper body	4-4.6	small bowl
CNP61	reduced core, oxidised margins	polished and painted in black outside and inside, well preserved	body	4.6-4.9	small open bowl; same vessel as CNP60?
CNP64	reduced core, oxidised margins	polished and painted black, well preserved	rim and neck	3.6-5	unknown, closed vessel

Table 5. Fine pottery showing irregular firing patterns; Majiayao site.

Sample number	Firing atmosphere / core colours	Surface treatment and preservation state of the decoration	Sherd type	Wall thickness in mm	Vessel shape
CNP2	slightly reduced outer half, oxidised inner half, surface oxidised	polished and painted black, well preserved	body	5	unknown
CNP7	outer margin looks light grey, the inner is red orange, there is a clear line between the two halves	polished and painted black, mostly preserved	body	6-6.5	unknown (larger closed vessel?), possibly from the same vessel as CNP6

CNP40	reduced inner core, orange oxidised outer core and buff margins	polished and painted black, mostly preserved on the rim, well preserved on the body	rim	7.5-8	unknown, large storage vessel?
CNP67	reduced core, only the outer very thin margin is oxidised	polished and painted black, well preserved	rim and neck	6.3-6.5	unknown, closed vessel

Coarse (26 samples)

Table A3.6. Coarse pottery fired in oxidising atmosphere; Majiayao site.

Sample number	Firing atmosphere / core colours	Surface treatment and preservation state of the decoration	Sherd type	Wall thickness in mm	Vessel shape
CNP9	oxidising	appliqué and cross-cord impression, mostly preserved	body	8	unknown; possibly a part of K.11998.19 which is a two-fabric vessel (not sampled for this study)
CNP35	oxidising	plain, well preserved	rim and spout	19	small, spouted jar
CNP52	oxidising	diagonal cord impression, well preserved	rim	10.8-11.7	jar

Table A3.7. Coarse pottery fired in reducing atmosphere; Majiayao site.

Sample number	Firing atmosphere / core colours	Surface treatment and preservation state of the decoration	Sherd type	Wall thickness in mm	Vessel shape
CNP12	reducing	cross-cord impression, mostly preserved	body	12	unknown
CNP13	reducing	cross-cord and finger (?) impression, mostly preserved	rim	10-11	large jar
CNP14	reducing	horizontal cord-impression, mostly preserved	rim	13.6-14	large jar

CNP20	reducing	diagonal cross-cord impression, mostly preserved	rim	10-11	unknown
CNP22	reducing	cross-cord impression, well preserved	body	6.5-7.5	unknown
CNP24	reducing	plain	body	3.3-5	unknown
CNP26	reducing	cross-cord impression and appliqué, mostly preserved	body	7.4-8.1	unknown
CNP29	reducing	cross-cord impression, well preserved	body	7.5-8.9	unknown
CNP30	reducing	cross-cord impression and appliqué, mostly preserved	body	6-7	unknown
CNP31	reducing	diagonal cord impression and appliqué, mostly preserved	body	4.6-8	unknown
CNP33	reducing	cross-cord impression and appliqué, mostly preserved	body	7.4-8.2	small, tall jar, similar to CNP18
CNP34	reducing	diagonal cord impression, mostly preserved	rim	rim 11, wall 9	small, spouted jar
CNP71	reducing	cross-cord impression and appliqué with diagonal cord impression, well preserved	rim	12-15	large jar

Table 8. Coarse pottery with oxidised core and reduced margins; Majiayao site.

Sample number	Firing atmosphere / core colours	Surface treatment and preservation state of the decoration	Sherd type	Wall thickness in mm	Vessel shape
CNP10	oxidised core with thin reduced margins	diagonal cord impression on the rim, mostly preserved; cord impression on the wall? very poorly preserved	rim	10-11	small jar

CNP11	oxidised core with thin reduced margins	appliqué, mostly preserved	rim	8.7	small jar
CNP21	oxidised core, reduced margins	finger (?) impressions and applique on the handle, poorly preserved	rim and part of a handle	rim 10.6, wall 6.7	small jar
CNP25	oxidised core, thin reduced margins	cross-cord impression and appliqué, well preserved	body	6	unknown

Table 9. Coarse pottery showing irregular firing patterns; Majiayao site.

Sample number	Firing atmosphere / core colours	Surface treatment and preservation state of the decoration	Sherd type	Wall thickness in mm	Vessel shape
CNP18	first oxidised and then reduced, the inside wall of the vessel is not completely reduced	cross-cord impression and appliqué with vertical cord impression, mostly preserved	body and base	wall 7.3	small, tall jar
CNP19	reduced, oxidised, reduced	diagonal cord impression on the rim, cross-cord impression on the body, mostly preserved	rim	rim 21, wall 11	large jar
CNP23	reduced exterior, interior core half oxidised, reduced margins	cross-cord impression and appliqué with vertical cord impressions, well preserved	body	9	unknown
CNP27	interior oxidised, exterior reduced	cross-cord impression and appliqué, well preserved	body	6.7-7.6	unknown
CNP28	first oxidised, then reduced - inner wall still oxidised	cross-cord impression and appliqué, mostly preserved	body	7-8	unknown

CNP32	uneven reduction, light brown spots on the sherd surface	cross-cord impression and appliqué, mostly preserved	body	8.8	unknown
-------	----------------------------------------------------------	------------------------------------------------------	------	-----	---------

Semi-coarse (3 samples)

Table A3.10. Semi-coarse pottery fired in oxidising atmosphere; Majiayao site.

Sample number	Firing atmosphere / core colours	Surface treatment and preservation state of the decoration	Sherd type	Wall thickness in mm	Vessel shape
CNP58	oxidising	polished and painted black, mostly preserved	rim	4-8.6	small bowl

Table A3.11. Semi-coarse pottery with reduced core and oxidised margins; Majiayao site.

Sample number	Firing atmosphere / core colours	Surface treatment and preservation state of the decoration	Sherd type	Wall thickness in mm	Vessel shape
CNP1	reduced core, oxidised margins	polished, painted in black, appliqué, well preserved	rim and upper body	rim 6.8, wall 5.8	small open bowl

Table A3.12. Semi-coarse pottery showing irregular firing patterns; Majiayao site.

Sample number	Firing atmosphere / core colours	Surface treatment and preservation state of the decoration	Sherd type	Wall thickness in mm	Vessel shape
CNP37	uneven oxidation? red oxidised core, outer margins: light brown margin to the exterior side and buff pink margin to the inner side	cord impression following one direction (orientation is unidentifiable on this body sherd), mostly preserved	body	3.7	unknown, large, closed vessel?

Coarse-fine combination (2 samples)

Table A3.13. Coarse-fine combination pottery fired in oxidising atmosphere; Majiayao site.

Sample number	Firing atmosphere / core colours	Surface treatment and preservation state of the decoration	Sherd type	Wall thickness in mm	Vessel shape
CNP16	oxidising	upper half polished and painted black, well preserved; lower half cross-cord impression and appliqué, mostly preserved	body	7.5-9	unknown, possibly large storage jar
CNP36	oxidising, buff yellow core, orange margins	plain, polished	rim and spout	8-10	small, spouted jar

WAGUANZUI (9 samples)

Fine (9 samples)

Table A3.14. Fine pottery fired in oxidising atmosphere; Waguanzui site.

Sample number	Firing atmosphere / core colours	Surface treatment and preservation state of the decoration	Sherd type	Wall thickness in mm	Vessel shape
CNP72	oxidising	polished and painted black and red, well preserved	body	3.2-6.4	unknown
CNP73	oxidising, red fabric with a buff margin on the inside	polished and painted black, mostly preserved	body	5.2-7.5	unknown
CNP74	oxidising, red core, buff margins	polished and painted black and dark red, well preserved	body	6-6.6	unknown
CNP77	oxidising, red core, buff margins	plain	body	6.2-8.8	unknown
CNP78	oxidising	erased red and black painted mark,	body	5.7-8.5	large vessel
CNP79	oxidising	polished and painted black, well preserved	body	4.6-5.6	small closed vessel

Table A3.15. Fine pottery with reduced core and oxidised margins; Waguanzui site.

Sample number	Firing atmosphere / core colours	Surface treatment and preservation state of the decoration	Sherd type	Wall thickness in mm	Vessel shape
CNP75	faint grey core, red margins	polished and painted black on the outside and brown (?) on the inside, mostly preserved	body	4.2-7.4	small open vessel
CNP76	faint grey core, red margins	polished and painted black, well preserved	body	5.2-5.8	unknown

Table A3.16. Fine pottery showing irregular firing patterns; Waguanzui site.

Sample number	Firing atmosphere / core colours	Surface treatment and preservation state of the decoration	Sherd type	Wall thickness in mm	Vessel shape
CNP80	oxidising with a faint grey layer	plain	body	5.6-8	unknown, large vessel

ZHUJIAZHAI (52 samples)Fine (25 samples)**Table A3.17. Fine pottery fired in oxidising atmosphere; Zhujiashai site.**

Sample number	Firing atmosphere / core colours	Surface treatment and preservation state of the decoration	Sherd type	Wall thickness in mm	Vessel shape
CNP100	oxidising	polished and painted black, mostly preserved	rim and handle	5-5.5	small vessel with one (?) loop handle
CNP108	oxidising	polished and painted black and red, mostly preserved	body	4.8-6.5	unknown
CNP112	oxidising	polished and painted red and black, mostly preserved	body	5.5-5.7	unknown

CNP113	oxidising	polished and painted red and black, well preserved	shoulder	5.3-8	unknown
CNP117	uneven oxidation, buff yellow core with a thin orange layer inside	polished and painted black, well preserved	body and handle	4.3-5.2	unknown
CNP120	oxidising	polished and painted black, well preserved	neck	4.5	closed vessel

Reducing atmosphere

Sample number	Firing atmosphere / core colours	Surface treatment and preservation state of the decoration	Sherd type	Wall thickness in mm	Vessel shape
CNP125	reducing(?)	polished and painted black, well preserved	rim	4.3-6.8	unknown

Table A3.18. Fine pottery with reduced core and oxidised margins; Zhujiashai site.

Sample number	Firing atmosphere / core colours	Surface treatment and preservation state of the decoration	Sherd type	Wall thickness in mm	Vessel shape
CNP95	reduced core, oxidised margins	polished painted black and red (?), mostly preserved	body	5-6.6	unknown
CNP96	reduced core, oxidised margins	polished and painted black and red on the inside, well preserved	rim	7-9.1	unknown
CNP97	reduced core, thin oxidised margins	polished and painted in black and red, well preserved	body	6.4-7.5	unknown
CNP98	reduced core, thin oxidised margins	polished and painted black, well preserved	rim	5-6.4	unknown
CNP107	slightly reduced core, oxidised margins	polished and painted red and black inside, well preserved	body	5-5.7	unknown
CNP114	slightly reduced core, oxidised margins	polished and painted black, well preserved	body	6.3-7	unknown

CNP116	slightly reduced core, oxidised margins	polished and painted black inside, well preserved	body	5-5.5	open vessel
CNP118	slightly reduced core, oxidised margins	polished and painted black, well preserved	body and handle	4.3-5.3	unknown
CNP119	reduced core, oxidised margins	polished and painted black, well preserved	body and handle	4.8-7.2	unknown
CNP121	slightly reduced core, oxidised margins	polished and painted black inside and outside, mostly preserved	rim	5.-5.7	unknown
CNP122	slightly reduced core, oxidised margins	polished and painted black inside, mostly preserved	rim	4.8	small open vessel
CNP123	reduced core, oxidised margins	polished and painted black, well preserved	rim	5-5.7	closed vessel?
CNP124	reduced core, oxidised margins	polished and painted black, well preserved	neck	5.7-7.8	unknown
CNP183	slightly reduced core and oxidised margins	polished and painted black, mostly preserved	body	7.2-8	unknown
CNP184	slightly reduced core and oxidised margins	polished and painted black, well preserved	shoulder	5.7-6.2	unknown
CNP185	reduced core, oxidised margins	polished and painted black, mostly preserved	body	4.5-5.7	unknown

Table A3.19. Fine pottery showing irregular firing patterns; Zhujiashai site.

Sample number	Firing atmosphere / core colours	Surface treatment and preservation state of the decoration	Sherd type	Wall thickness in mm	Vessel shape
CNP99	reduced core, oxidised margins; above the handle inside surface is dark brown and the outside is yellow. Inside surface below the handle has a bright orange colour	polished and painted black, well preserved	body and handle	5	unknown
CNP186	layers - exterior orange, middle red orange, interior light grey, inside surface orange	polished and painted black, well preserved	body	5.7-7.8	unknown

Coarse (18 samples)

Table A3.20. Coarse pottery fired in oxidising atmosphere; Zhujiashai site.

Sample number	Firing atmosphere / core colours	Surface treatment and preservation state of the decoration	Sherd type	Wall thickness in mm	Vessel shape
CNP85	oxidising	appliqué, poorly preserved	body	6	unknown
CNP90	oxidising, exterior surface is black (unsure if result of reduction)	cross-cord impression, poorly preserved	rim and upper body	wall 6.4-7.8, rim 5.6-9.8	medium jar?
CNP91	oxidising	polished and painted red, poorly preserved	body and handle base	8.2-13.2	unknown
CNP101	oxidising, buff core, orange margins	impression on the rim, well preserved; wall decoration could not be identified, possibly diagonal basket impression, poorly	rim	4.2-5.2	unknown

		preserved			
CNP104	uneven oxidation, buff core, thin red exterior margin	appliqué, well preserved	body	3.9-8	unknown
CNP105	oxidising	vertical cord impression and appliqué, mostly preserved	rim	5-7.3	unknown
CNP106	oxidising, but exterior surface brown	impression on the rim, poorly preserved; diagonal appliqué on the wall	rim	5.3-6.4	small closed vessel?
CNP126	oxidising	cross-cord impression and appliqué, well preserved	rim, handle body	5.8-6.5	small open vessel with one (?) loop handle

Table A3.21. Coarse pottery with oxidised core and reduced margins; Zhujiashai site.

Sample number	Firing atmosphere / core colours	Surface treatment and preservation state of the decoration	Sherd type	Wall thickness in mm	Vessel shape
CNP82	oxidised core, reduced margins	diagonal cord impression and appliqué, mostly preserved	body and handle	8-10.4	unknown
CNP83	oxidised core, reduced margins	vertical or cross-cord impression on the wall, poorly preserved; appliqué on the handle, well preserved	body and handle	6-8.8	small open vessel with one (?) loop handle
CNP89	oxidised core, thin reduced margins	finger (?) impression, mostly preserved	rim	wall 14, rim 10	unknown

Table A3.22. Coarse pottery with reduced core and oxidised margins; Zhujiashai site.

Sample number	Firing atmosphere / core colours	Surface treatment and preservation state of the decoration	Sherd type	Wall thickness in mm	Vessel shape
CNP84	slightly reduced core, oxidised margins	plain	full profile	6.2-11.4	small closed vessel with one (?) loop handle

Table 23. Coarse pottery showing irregular firing patterns; Zhujiashai site.

Sample number	Firing atmosphere / core colours	Surface treatment and preservation state of the decoration	Sherd type	Wall thickness in mm	Vessel shape
CNP86	oxidised core with reduced exterior and interior surface	cross-cord impression, poorly preserved	body and a handle base	6-8.8	unknown
CNP87	oxidised outside, reduced inside	vertical or cross-cord impression and appliqué, poorly preserved	body	7.2-9.5	unknown
CNP88	oxidised core with reduced exterior surface	plain	body	7.5-13	unknown
CNP103	reduced core with oxidised interior surface	vertical and cross-cord impression and appliqué, poorly preserved	neck and shoulder	7.8-11	medium open vessel?
CNP127	reduced core with oxidised interior surface	plain	body	7	unknown
CNP182	unclear if oxidising or reducing, pale yellow greyish fabric	polished and painted red, poorly preserved	body	10.8-14	unknown

Semi-coarse (9 samples)

Table A3.24. Semi-coarse pottery fired in oxidising atmosphere; Zhujiashai site.

Sample number	Firing atmosphere / core colours	Surface treatment and preservation state of the decoration	Sherd type	Wall thickness in mm	Vessel shape
CNP93	oxidising	polished and painted black, well preserved	body	4.3-5.5	unknown

CNP111	oxidising	polished and painted red and black, well preserved	body	4.4-5.1	unknown
--------	-----------	----------------------------------------------------	------	---------	---------

Table A3.25. Semi-coarse pottery fired in reducing atmosphere; Zhujiashai site.

Sample number	Firing atmosphere / core colours	Surface treatment and preservation state of the decoration	Sherd type	Wall thickness in mm	Vessel shape
CNP115	reducing? rather dull yellow brown than grey	polished and painted brown (?) on the inside and outside, mostly preserved	rim	5.3	unknown

Table A3.26. Semi-coarse pottery with reduced core and oxidised margins; Zhujiashai site.

Sample number	Firing atmosphere / core colours	Surface treatment and preservation state of the decoration	Sherd type	Wall thickness in mm	Vessel shape
CNP92	slightly reduced core, oxidised margins	polished and painted brown (?), mostly preserved	body	4	unknown
CNP94	reduced core, oxidised margins	polished and painted black and red, well preserved	body	3.2-5	unknown
CNP102	reduced core, thin oxidised margins	polished and painted black and red, well preserved	body	3.7-4.5	unknown
CNP109	slightly reduced core, oxidised margins	polished and painted red and black or brown, mostly preserved	body	5.8-6.7	unknown

Table 27. Semi-coarse pottery showing irregular firing patterns; Zhujiashai site.

Sample number	Firing atmosphere / core colours	Surface treatment and preservation state of the decoration	Sherd type	Wall thickness in mm	Vessel shape
CNP81	half of the core is light grey, other red, orange oxidised margins	polished and painted white and brown (?), mostly preserved	body, rim, and handle	4-5	small closed vessel
CNP110	oxidised inner core, reduced outer core, oxidised margins	polished and painted black, mostly preserved	rim	6.1-7	unknown

LUOHANTANG (55 samples)

Fine (24 samples)

Table A3.28. Fine pottery fired in Oxidising atmosphere; Luohantang site.

Sample number	Firing atmosphere / core colours	Surface treatment and preservation state of the decoration	Sherd type	Wall thickness in mm	Vessel shape
CNP128	oxidising	polished and painted brown inside and outside, well preserved	body	3.7-4.8	open vessel
CNP129	oxidising	polished and painted black, well preserved	neck	6.4-8.5	closed vessel?
CNP132	oxidising	polished and painted black, well preserved	body	4.9-6	bowl
CNP133	oxidising	polished and painted black, well preserved	body	4.4-6.1	unknown
CNP134	oxidising	polished and painted black, well preserved	body	7.3-8.4	unknown
CNP135	oxidising	polished and painted black inside and outside, well preserved	rim	wall 3.3, rim 6.6	open vessel, possibly bowl

CNP136	oxidising	polished and painted black, well preserved	body	3.5	small open vessel
CNP139	oxidising	polished and painted brown (?), mostly preserved	body	6-7.4	unknown
CNP140	oxidising	polished and painted black inside and outside, well preserved	rim	wall 2.6, rim 5.5	medium open vessel?
CNP141	oxidising	polished and painted black, well preserved	rim and neck	wall 4.2-3, rim 6.2	medium/large closed vessel?
CNP144	oxidising	polished and painted black, well preserved	full profile	4.2-4.6	bowl
CNP146	oxidising	polished and painted black, mostly preserved	body	4-4.6	unknown
CNP147	oxidising	polished and painted black inside and outside, mostly preserved	body	5.7-6.2	bowl
CNP148	oxidising	polished and painted black, well preserved	rim	6.2-7	unknown
CNP150	oxidising	polished and painted black, poorly preserved	body	3.7-5	bowl
CNP173	oxidising	cross-cord impression, poorly preserved	body and base	8-6.3	tall sieve?
CNP180	oxidising	polished and painted black inside and outside, well preserved	rim	4.4-5.6	bowl

Table A3.29. Fine pottery fired in reducing atmosphere; Luohantang site.

Sample number	Firing atmosphere / core colours	Surface treatment and preservation state of the decoration	Sherd type	Wall thickness in mm	Vessel shape
CNP131	reducing? fabric has a dull yellow brown colour	polished and painted black, mostly preserved	neck	4-5.6	unknown
CNP168	reducing? overfired	plain	rim	5-9.2	bowl?

Table A3.30. Fine pottery with reduced core and oxidised margins; Luohantang site.

Sample number	Firing atmosphere / core colours	Surface treatment and preservation state of the decoration	Sherd type	Wall thickness in mm	Vessel shape
CNP149	reduced core, oxidised margins	polished and painted black, mostly preserved	rim	5-5.8	bowl
CNP151	reduced core, oxidised margins	polished and painted black, well preserved	body	6.1-7.2	unknown
CNP153	reduced core, oxidised margins	polished and painted black, well preserved	body	7.8-9.2	unknown
CNP154	reduced core, oxidised margins	streaks of red paint on the inside, well preserved	body	4.7-7.8	bowl?

Table A3.31. Fine pottery showing irregular firing patterns; Luohantang site.

CNP152	not fully oxidised inner layer, oxidised outer layer	polished and painted black, well preserved	body	7.2-9.2	unknown
--------	------------------------------------------------------	--------------------------------------------	------	---------	---------

Coarse (26 samples)**Table A3.32. Coarse pottery fired in oxidising atmosphere; Luohantang site.**

Sample number	Firing atmosphere / core colours	Surface treatment and preservation state of the decoration	Sherd type	Wall thickness in mm	Vessel shape
CNP130	oxidising	polished and painted black, well preserved	body	6.7	unknown
CNP137	oxidising, dull brown exterior surface	cross-cord impression and appliqué, well preserved	body	9.3-11.1	unknown
CNP138	oxidising	plain	rim and upper body	4.7-7.8	unknown
CNP142	oxidising	plain	rim and upper body	6.2-7.5	unknown

CNP159	oxidising	plain or slipped?	neck	6.5-13	closed vessel
CNP162	oxidising	diagonal cord impression, mostly preserved	rim	rim 12.2, wall 7.6-9.2	bowl
CNP166	oxidising? buff light brown colour	diagonal cord impression, mostly preserved	rim	6.4-9.5	bowl
CNP167	oxidising	plain	rim and upper body	4.8-5.5	small round jar
CNP171	oxidising	plain	body and handle	5.4-6.3	unknown
CNP177	oxidising	cross-cord impression (?) and appliqué, mostly preserved	rim	10-14.5	unknown

Table 33. Coarse pottery fired in reducing atmosphere; Luohantang site.

Sample number	Firing atmosphere / core colours	Surface treatment and preservation state of the decoration	Sherd type	Wall thickness in mm	Vessel shape
CNP157	reducing	diagonal cord impression, appliqué with dark paint, well preserved	rim and body	5.2-6	small closed vessel?
CNP161	reducing	diagonal cord impression, mostly preserved	rim	7.5-8.8	bowl
CNP164	reducing	diagonal cord impression and appliqué, mostly preserved	rim	8.1-9.3	unknown
CNP170	reducing	diagonal cord impression, poorly preserved	rim	8.8-6.6	bowl
CNP174	reducing	cord impression on the base outside and red paint inside, poorly preserved	base	8.9-11.5	unknown

CNP176	reducing, overfired	cross-cord impression, poorly preserved	body	7.1-7.4	unknown
CNP178	reducing	diagonal cord impression, well preserved	rim	9.1-11.2	bowl

Table A3.34. Coarse pottery with oxidised core and reduced margins; Luohantang site.

Sample number	Firing atmosphere / core colours	Surface treatment and preservation state of the decoration	Sherd type	Wall thickness mm	Vessel shape
CNP169	oxidised core, reduced margins	cross-cord impression, mostly preserved	rim	wall 7.5-9.6, rim 6.6-7.5	bowl

Table A3.35. Coarse pottery with reduced core and oxidised margins; Luohantang site.

Sample number	Firing atmosphere / core colours	Surface treatment and preservation state of the decoration	Sherd type	Wall thickness in mm	Vessel shape
CNP156	reduced core, oxidised margins	upper part polished and painted black, well preserved; small spot with preserved cord mark on the lower part - mixed fabric?	body	5.7-7	unknown
CNP165	reduced core, oxidised margins	plain	neck	4.7-17	closed vessel

Table A3.36. Coarse pottery showing irregular firing patterns; Luohantang site.

Sample number	Firing atmosphere / core colours	Surface treatment and preservation state of the decoration	Sherd type	Wall thickness in mm	Vessel shape
CNP158	oxidised inside, reduced outside	vertical cord impression on the body and appliqué on the rim, well	rim and upper body	4.2-5	medium closed vessel?

		preserved			
CNP160	oxidised, except for the thin exterior margin which is black	cross-cord impression and appliqué, mostly preserved	rim and upper body	6.5-9	medium closed vessel?
CNP163	unclear, fabric has a dull yellow greenish colour	diagonal cord impression, poorly preserved	rim	7.3-9.6	bowl?
CNP172	oxidising, exterior surface thin layer reduced	vertical (?) cord impression, poorly preserved	body and handle	5.7-7.4	closed, with loop handles?
CNP175	oxidised but outer surface dark grey colour	vertical cord impression and appliqué, mostly preserved	body	10.8-13.6	unknown
CNP179	oxidising, exterior surface thin layer reduced	vertical cord impression and appliqué (?), poorly preserved	body	3.7-6.3	unknown

Coarse-fine combination (5 samples)

Table A3.37. Coarse-fine combination pottery fired in oxidising atmosphere; Luohantang site.

Sample number	Firing atmosphere / core colours	Surface treatment and preservation state of the decoration	Sherd type	Wall thickness in mm	Vessel shape
CNP155	oxidising	upper half polished and painted black, well preserved; lower half cross-cord impression and appliqué, mostly preserved	body	5.5-7.3	large globular jar? Same vessel as CNP187?

CNP187	oxidising	upper half polished and painted black, well preserved; lower half cross-cord impression and appliqué, mostly preserved	body	5.9-7.2	large globular jar? Same vessel as CNP155?
--------	-----------	------------------------------------------------------------------------------------------------------------------------	------	---------	--------------------------------------------

Table A3.38. Coarse-fine combination pottery with Reduced core, oxidised margins; Luohantang site.

Sample number	Firing atmosphere / core colours	Surface treatment and preservation state of the decoration	Sherd type	Wall thickness in mm	Vessel shape
CNP143	reduced core, oxidised margins	upper half polished and painted black, well preserved; lower half cord impression? poorly preserved	neck and shoulder	6.4-11.2	closed bottle?
CNP145	reduced core, oxidised margins	upper half polished and painted black, lower half cord impression (?)	body and handle	6.2-6.5	unknown

Table 39. Coarse-fine combination pottery showing irregular firing patterns; Luohantang site.

Sample number	Firing atmosphere / core colours	Surface treatment and preservation state of the decoration	Sherd type	Wall thickness in mm	Vessel shape
CNP181	oxidised fine fabric; coarse fabric has a reduced inner layer and oxidised exterior layer	upper half polished and painted black, lower part diagonal cord impression, well preserved	body	4.4-5.9	closed vessel with protruding shoulder?